

VAWB

Verein zur Aus- und Weiterbildung
für Einbau, Kontrolle und Wartung
von Bauwerksausstattung e. V.

Pfaffenwaldring 32
70569 Stuttgart

Phone: (+49) 711 685 62580 (Secretariat)

Fax: (+49) 711 685 63070

www.vawb-ev.de

Contact:

VAWB

Dipl.-Ing. M. Schmidberger

e-mail: mschmidberger@mageba-group.com

Phone: (+49) 551 389 04 249

MPA

Materials Testing Institute (MPA)
University of Stuttgart
Unit Bearing and Expansion Joints
in Structural Engineering (PÜZ)

Pfaffenwaldring 32
70569 Stuttgart

Phone: (+49) 711 685 62580 (Secretariat)

Fax: (+49) 711 685 63070

www.mpa.uni-stuttgart.de

Contact:

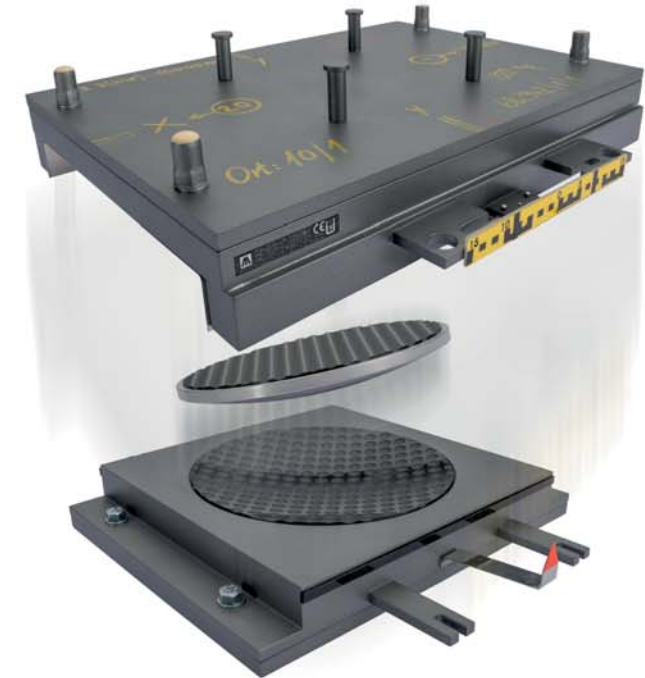
MPA

Dipl.-Ing. S. Gerber

e-mail: siegfried.gerber@mpa.uni-stuttgart.de

Phone: (+49) 711 685 62557

Courses:
Experts for Bearings in
Structural Engineering
according to EN 1337



Current
dates for training
courses under:

[https://www.mpa.uni-stuttgart.de/en/
events_education_and_training/training_courses/](https://www.mpa.uni-stuttgart.de/en/events_education_and_training/training_courses/)



Introduction

Bridges are important structures for the infrastructure of a country. To ensure that they fulfill their function in the long term, high demands are placed on them and their individual components, particularly in terms of load-bearing safety and usability. This also applies without restriction to their bearings. For this reason, the professional installation of bearings is particularly important in order to ensure the long-term operational safety of the entire bridge system.

The courses A, B and C are designed to provide participants with the theoretical and practical knowledge they need to install bearings in bridge and building construction.



Course offers

The following contents are taught:

- Design and characteristics of permissible bearing types
- Essential contents of valid regulations
- Quality control after delivery of the bearings
- Independent preparation of the necessary documents during installation
- Practical exercises: Installation and relocation

Three different bearing installation courses are offered, tailored to practical requirements:

- **Course A:** The five-day bearing installation course with examination serves to acquire a certificate, valid for 5 years, which qualifies the course participant to install bearings in bridge and building construction. The admission requirements for course A must be met in order to participate.
- **Course B:** The two-day bearing installation basic course without examination serves the acquisition of knowledge of installation and installation check for bearings in bridge and building construction. For participation no prerequisites are required.
- **Course C:** The two-day refresher course with examination serves to extend the certificate acquired in course A for a further 5 years.

